



FUTURA *M* SERIES

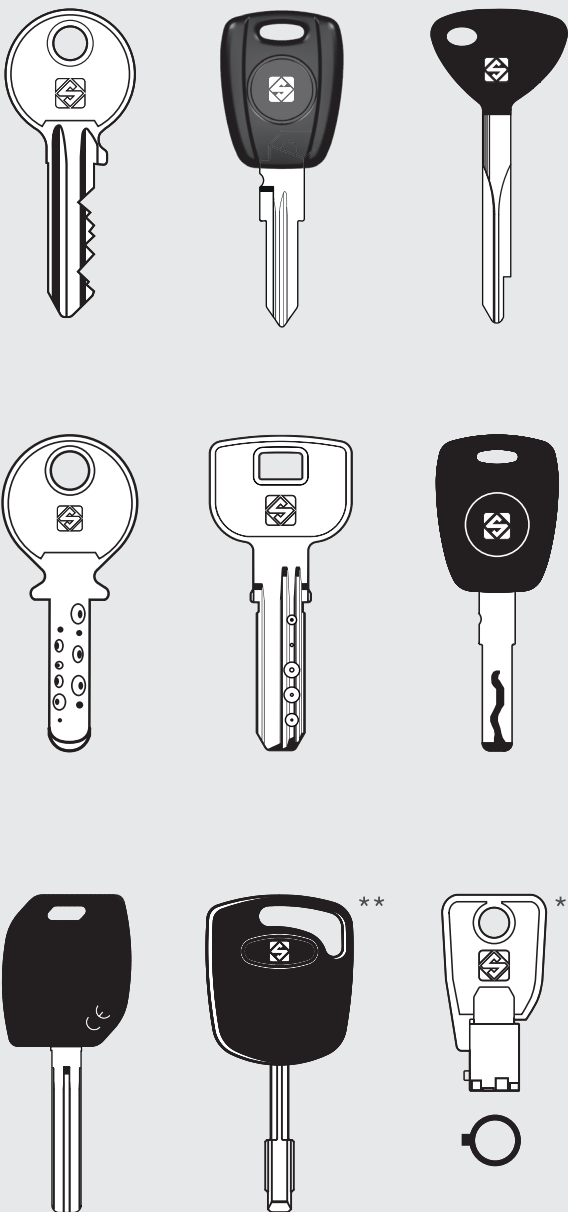




All-in-one, electronic key cutting machine

Silca's iconic key cutting machine is now faster, quieter and even easier to use. Thanks to the easy-to-use yet powerful software, and ability to cut all types of keys including protected systems and customised cylinders, the Futura M Series is the perfect all-in-one solution to deliver a professional key-cutting service.

KEYS CUT FUTURA M SERIES



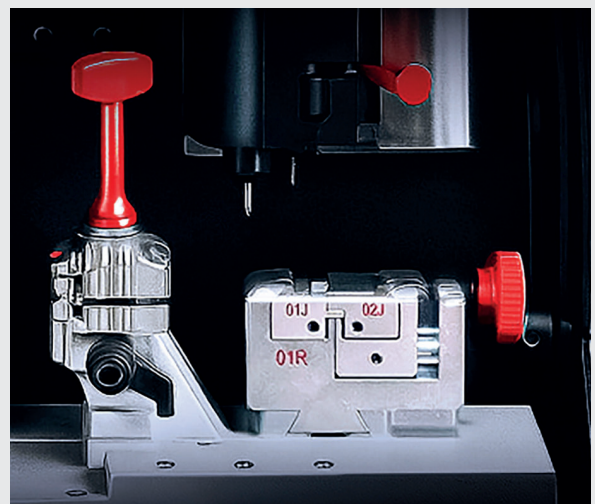
** Keys cut with optional accessory for M400 and M600 models

MAIN FEATURES

Futura M features a double cutting station meaning flat, cruciform, laser and dimple keys, both residential and automotive, can all be cut using a single machine.

The wide range of optional accessories available further increases the machine's cutting capabilities allowing almost any residential and vehicle key on the market to be cut.

New with the Futura M are an integrated monitor always connected to the machine, a long-life widia cutter and a new motor driver for significantly quieter operation.



QUIET OPERATION



NEW WIDIA CUTTER

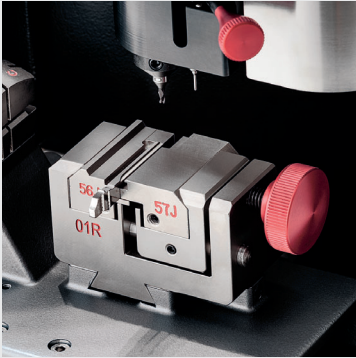


STABLE INTERNET CONNECTION



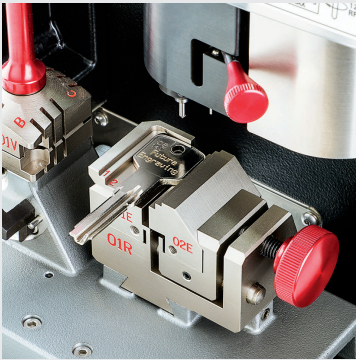
BUSINESS GROWTH

FUTURA M MODELS



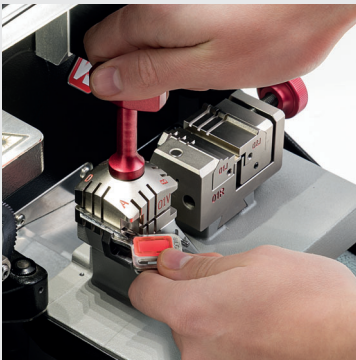
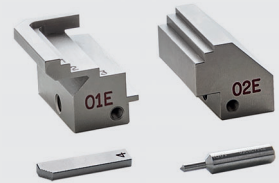
COMPLETE KEY CUTTING SOLUTION FUTURA **M900**

- Lifetime software subscription included.
- Engraving jaws 01E and 02E plus engraving cutter 18DW included.
- Range of accessories to cut vehicle keys for makes including Ford*, Volkswagen*, Mercedes* and BMW*.
- Aluminium case to hold all the automotive and engraving accessories.



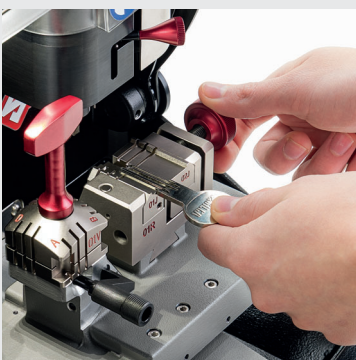
KEY CUTTING AND ENGRAVING FUTURA **M600**

- Optimised engraving for a wide range of keys, medals and nameplates.
- Engraving accessories 01E and 02E jaws plus engraving cutter 18DW included.
- Pre-set engraving models and guided procedures.



FLAT AND CRUCIFORM KEY CUTTING STATION FUTURA **M400 / M600 / M900**

- Copy by code and copy by original.
- Decoding via optical reader.
- Long-life widia cutter.
- Four-sided, rotating clamp.
- Gauge for precise key installation



LASER AND DIMPLE KEY CUTTING STATION FUTURA **M400 / M600 / M900**

- Decoding by electrical contact.
- Pull-out tracer point.
- Clamp with easy to install, interchangeable jaws.
- Automatic calibration of tracer and cutting station with new clamp protection pin.

SUPERIOR QUALITY



Widia cutter for flat keys

Made from coated hard metal for faster, more precise cutting and longer-lasting performance.



Integrated monitor

Industrial-grade 10-inch, colour touch-screen display, adjustable to give the perfect viewing angle.



Easy to use software

Proven, familiar, intuitive user interface with one-touch software updates via the internet.

SUPERIOR FUNCTIONALITY



Fast start-up

An illuminated on/off button starts both the machine and display together.



Quiet

Low noise thanks to a new motor driver, improved carriage control and a more robust rear bodyshell.



Stable Internet connection

Machine and display take the same internet connection for uninterrupted key cutting.

MODEL COMPARISON

FEATURES	<i>M400</i>	<i>M600</i>	<i>M900</i>
Double cutting station	●	●	●
Cuts flat, laser, dimple and cruciform keys	●	●	●
Long life widia cutter for flat keys	●	●	●
Integrated, industrial-grade monitor	●	●	●
New motor driver for quieter operation	●	●	●
Proven, easy-to-use software	●	●	●
Integrated residential key database	●	●	●
Integrated automotive key database	●	●	●
Single on/off button for fast start-up	●	●	●
Single internet connection for machine and display	●	●	●
Cut by code or by copy (flat keys)	●	●	●
Optical decoding for flat keys	●	●	●
Automatic calibration	●	●	●
Engraving kit included (01E & 02E jaws, 18DW cutter)		●	●
Lifetime software subscription included			●
Clamp 03R for Ford* keys			●
Jaw 04J for BMW* and Mercedes* keys			●
Jaw 19J for Audi*, Ford* and Volvo* keys			●
Jaws 56J & 57J for Volkswagen* group keys			●
Adapter A34 for Ford* & Mercedes* keys			●
Adapter AB6 for Simplex* keys			●
Aluminium accessory case			●

TECHNICAL DATA

Power supply	Machine: 24V d.c. - 5,5 Amp. - 130W - Power pack: 90/264V a.c. - 50/60Hz - 220W
Cutter motor (flat cuts)	24V d.c.
Cutter motor (dimple/laser cuts)	24V d.c.
Prismatic cutter (flat cuts)	U01W, in widia hard metal with coating
Cutter (dimple cuts)	01D, in HSS super rapid steel
Cutter (laser cuts)	01LW, in carbide, AlCrN coated
Tool speed	Prismatic cutter: 1585 rpm - Cutter (dimple/laser cuts): 12100 rpm
Movements	on 3 axes (with special bushes) driven by step motors (on rectified roller guides)
Clamp (flat cuts)	01V, removable, with 4 universal sides for holding flat, vehicle and cruciform keys
Clamp (dimple/laser cuts)	01R, removable and provided with interchangeable jaws (01J and 02J)
Runs	X axis: 30 mm, Y axis: 50 mm, Z axis: 27 mm
Dimensions	width: 318 mm, depth: 413 mm, height with display open: 530 mm (with display closed: 365 mm)
Weight	20 Kg

(*) This is a trademark of a third party not affiliated nor linked with Silca S.p.A. or the dormakaba Group. Silca S.p.A. and dormakaba Group do not own any intellectual property right nor have been granted any license with regard to such trademark, which is hereby used only to indicate the intended purpose of Silca's products.



Futura M Series has been designed and manufactured in conformity with CE mark European standards.

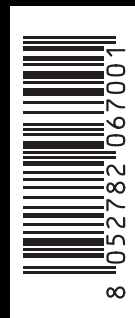
The illustrations and technical data regarding the products in the document are to be considered indicative. Silca reserves the right to alter products designs, dimensions or info to improve the products quality. The contents of this document are fully protected by Copyright and may not be copied or reproduced in any form, without written permission from Silca S.p.A. For any dispute the competent Court is that of Treviso, the applicable law is that of Italy.



CONNECT TO
MYKEYS **PRO**

P1NY

FUTURA M SERIES BROCHURE - EN



11/2025

ITALY AND OTHER COUNTRIES

SILCA S.p.A.

Via Podgora, 20 (Z.I.)
31029 VITTORIO VENETO (TV)
Phone +39 0438 9136
Fax +39 0438 913800
E-mail: silca@silca.it
Italy: www.silca.it
International Markets:
www.silca.biz

GERMANY

SILCA GmbH

Siemensstrasse, 33
42551 VELBERT
Phone: +49 2051 2710
Fax +49 2051 271172
E-mail: info@silca.de
www.silca.de

FRANCE

SILCA S.A.S

12, Rue de Rouen
Z.I. Limay-Porcheville
78440 PORCHEVILLE
Phone: +33 1 30983500
Fax +33 1 30983501
E-mail: info@silca.fr
www.silca.fr

SPAIN

SILCA KEY SYSTEMS S.A.

Avinguda Conflent, 52 Nave 7
08915 BADALONA
Phone: +34 93 4981400
E-mail: silca@silca.es
www.silca.es

BENELUX

H. CILLEKENS & B.V.

Metaalweg, 4
6045 JB ROERMOND
Phone: +31 475 325147
Fax +31 475 323640
E-mail: info@hcillekens.nl
www.hcillekens.nl

UNITED KINGDOM

**SILCA LTD. & ADVANCED
DIAGNOSTICS Ltd.**

Eastboro Fields
Hemdale Business Park
CV11 6GL Nuneaton
United Kingdom
www.silca.co.uk



dormakaba Group